

# V2

DIGITAL CANVAS

## Installation Guide

# Safety and Warnings

---



• **WARNING:** use caution concerning the power cord (can differ by country). Do not connect too many devices to the same AC power outlet as this could result in fire or electric shock. Do not overload wall outlets. Overloaded wall outlets, loose or damaged wall outlets, extension cords, frayed power cords and damaged/cracked wire insulation are dangerous. Any of these conditions could result in electric shock or fire. Periodically examine the cord of your device, if its appearance indicates damage or deterioration, unplug it, discontinue use of the device, and have the cord replaced with an exact replacement part by an authorized servicer. Protect the power cord from physical or mechanical abuse, such as being twisted, kinked, pinched, closed in a door, or walked upon. Be sure to grasp the plug when unplugging the power cord.

• **WARNING:** To reduce the risk of fire or electrical shock, do not expose this product to rain, moisture or other liquids. Do not touch the apparatus with wet hands. Do not install this product near flammable objects such as gasoline or candles, or expose the apparatus to direct air conditioning.

• Do not use this apparatus near water.

• Install in accordance with the manufacturer's instructions.

• Do not install near any heat sources such as radiators, heat registers, stoves, or other apparatus (including amplifiers) that produce heat.

• Do not defeat the safety purpose of the polarized or grounding type plug. A polarized plug has two blades with one wider than the other while a grounding type plug has two blades and a third grounding prong. If the provided plug does not fit into your outlet, consult an electrician for replacement of the obsolete outlet. If grounding methods are not possible, have a qualified electrician install a separate circuit breaker. Do not try to ground the unit by connecting it to telephone wires, lightning rods, or gas pipes.

• Use only with the wall mount, power pack and accessories specified by the manufacturer, or sold with the apparatus.

• Unplug this apparatus during lightning storms or when unused for long periods of time.

• Do not touch the end of the power cord while it is plugged.

• Refer all servicing to qualified service personnel. Servicing is required when the apparatus has been damaged in any way, such as when the Power Supply, power cord or plug is damaged, liquid has been spilled or objects have fallen into the apparatus, the apparatus has been exposed to rain or moisture, does not operate normally, or has been dropped.

• Keep the packing material out of the reach of children. Anti-moisture material is harmful if swallowed, induce vomiting and go to the nearest hospital. Keep it out of the reach of children.



• Do not expose to dripping or splashing. Do not place objects filled with liquids, such as vases, cups, etc. over the apparatus.

• Do not attempt to modify this product in any way without written authorization from Videri. Unauthorized modification could void the user's authority to operate this product.

• When operating for a long period, the frame may become hot. This does not affect the performance of the product or cause defects in the product. Always install the display where there is proper ventilation. Do not cover the product with cloth or other materials while in operation. Do not install in a confined space such as a bookcase. Do not install in excessively dusty places.

• If you smell smoke or other odors coming from the apparatus, unplug the power cord and contact customer support.

• Keep the product away from direct sunlight.

• Never touch this apparatus during a lightning storm.

• Do not allow any impacts or shocks to the product, do not drop anything onto the LCD glass.

• Make sure the power cord is connected securely to the power plug of the power pack.

• Do not use high voltage electrical equipment near the display. This may result in product malfunction.

• **Cleaning:** unplug the power cord and wipe gently with a soft cloth to prevent scratching. Do not spray water or other liquids directly on the apparatus as electric shock may occur. Do not use cleaners containing alcohol, thinners, benzene or ammonia.

• **Moving:** make sure the product is turned off and unplugged. Do not press or put stress on the front panel of the apparatus.

**Read these instructions.**

**Keep these instructions.**

**Follow all warnings and instructions.**

# Contents

---

**Unboxing and Handling..... 3**

**Installation: Wall Cleat ..... 5**

    Packing List..... 8

    Installation ..... 9

    Dimensions ..... 12

**Data Sheet: V2 Digital Canvas ..... 15**

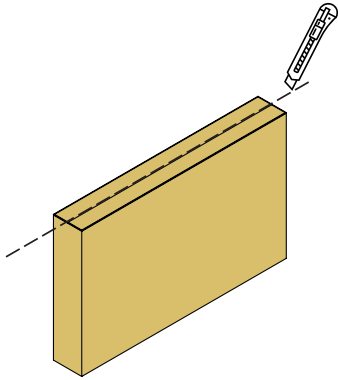
    Data Sheet..... 17

    Dimensions ..... 18

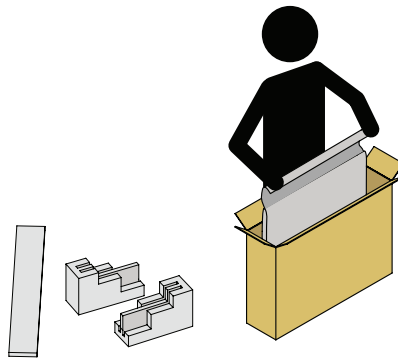
**Help & Troubleshooting ..... 20**

# Unboxing

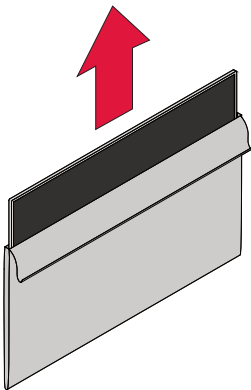
---



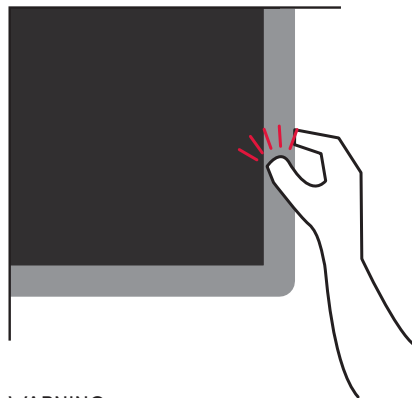
Carefully open box.



Remove protective foam. Hold the bag firmly and pull V2 Digital Canvas out of the box.



Remove V2 Digital Canvas from protective bag.



## WARNING

Do not press on edges of V2 Digital Canvas.

# Notes

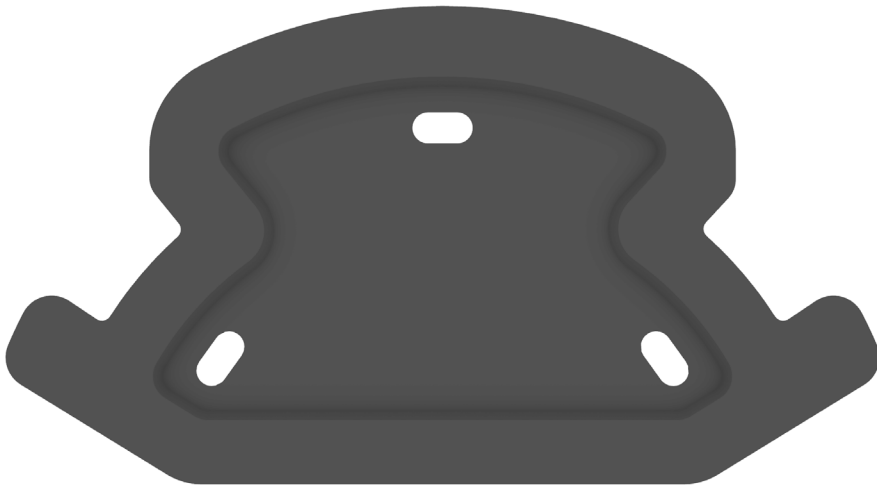
---

I N S T A L L A T I O N

# Wall Cleat

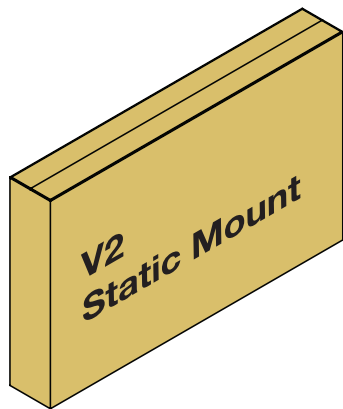
# Wall Cleat

---



# Shipping Box

---



## V2 Digital Canvas

**Dimension of box**

22" x 6.5" x 15"

558mm x 166mm x 386mm

**Weight**

17.69 lbs

8.03 kg

# Required Tools

---



Pencil



No. 2 Phillips  
Screwdriver





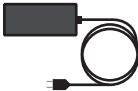


Level



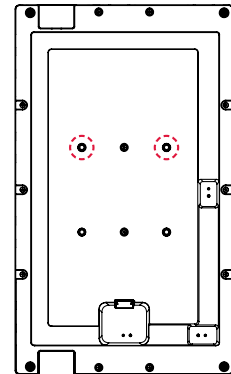
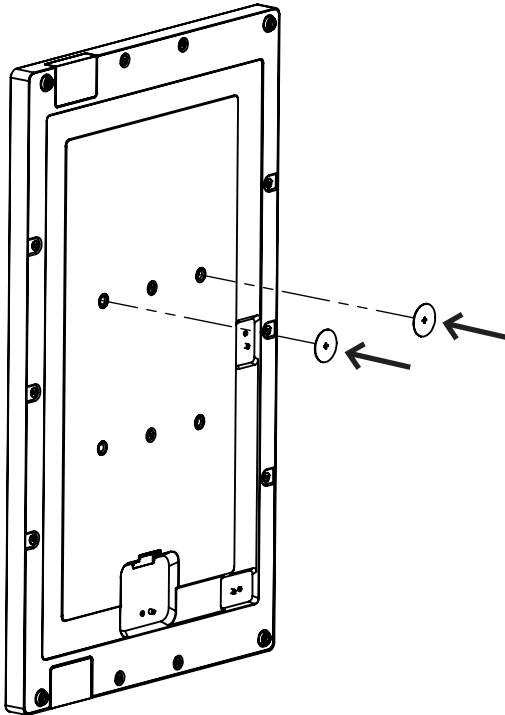
# Packing List

---

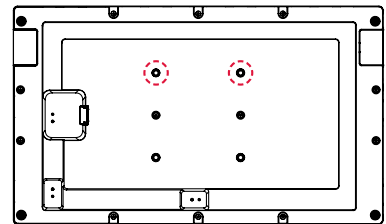
V2 Digital Canvas	1	
Wall Cleat	1	
Wall Anchors and #8x1" Screws	3	
DC Power Cable	1	
AC/DC Converter 90W	1	

# Installation

## 1 Install Hanging Screws



Portrait Screw Locations

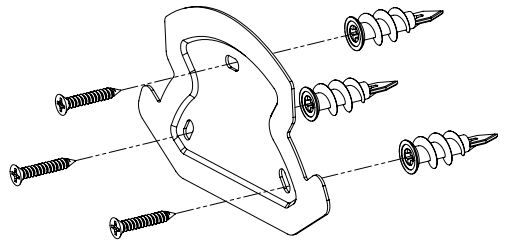
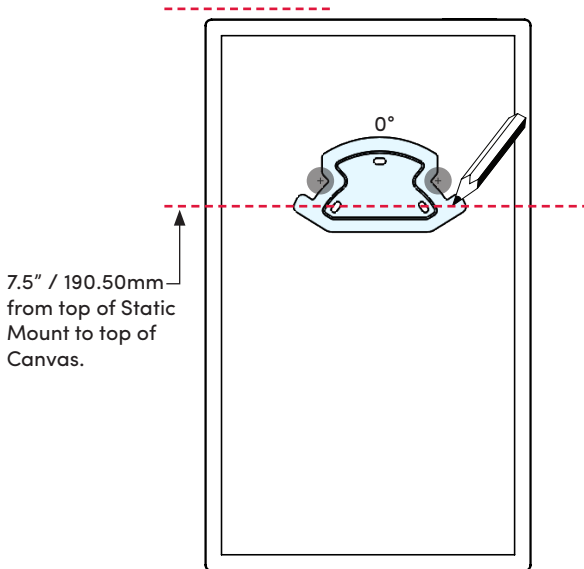


Landscape Screw Locations

1. Screw Hanging Screws into back of Canvas in specified locations.
2. Make sure Hanging Screws are tight and fully inserted.

# Installation

## 2 Install Wall Cleat

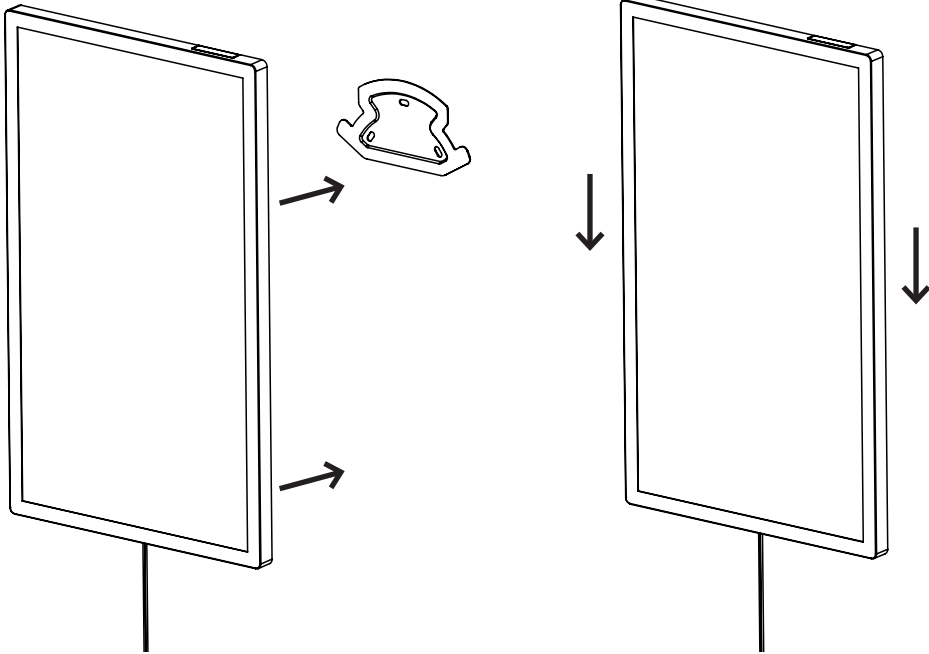


1. Position Wall Cleat at desired location on wall. Ensure Wall Cleat is level.
2. Mark centers of mounting slots.
3. Remove Wall Cleat.
4. Screw wall anchors into wall at marked locations.
5. Fasten Wall Cleat to wall using supplied #8x1" screws.
6. Screws must be fully tightened.
7. Adjust Wall Cleat to level.

# Installation

---

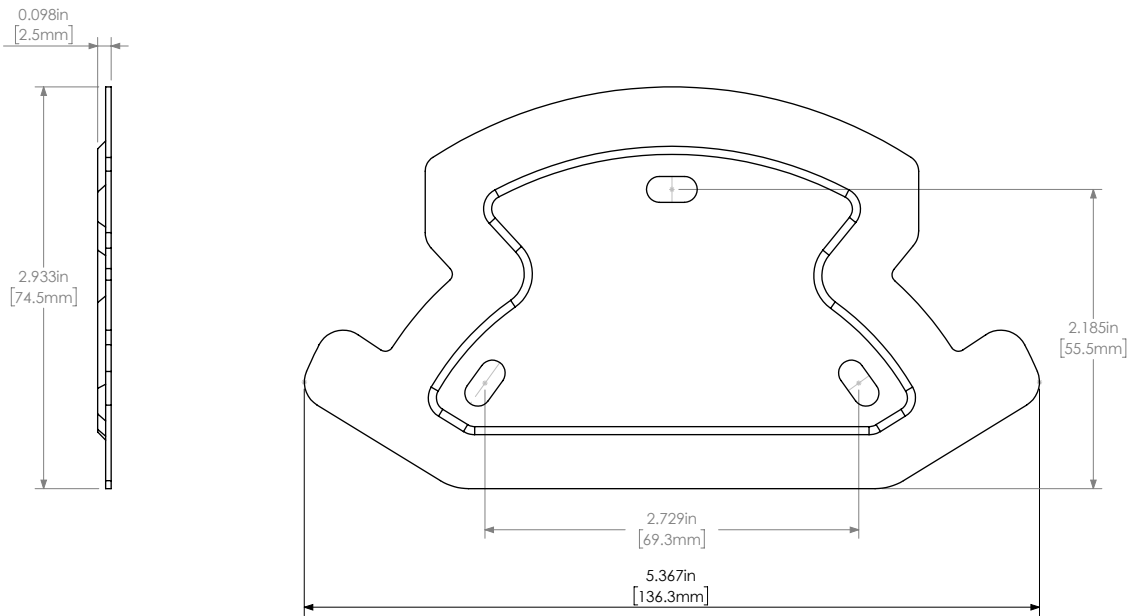
## 3 Mount V2 Digital Canvas onto Wall Cleat



1. Align V2 Digital Canvas with Wall Cleat.
2. Push V2 Digital Canvas against wall.

3. Lower V2 Digital Canvas onto Wall Cleat until fully engaged.
4. Supporting the Canvas from the bottom, gently push down on the top edge of the Canvas to ensure the Canvas is fully engaged.

# Dimensions: Wall Cleat



# Notes

---

# Notes

---

DATASHEET

# V2 Digital Canvas



# V2 Digital Canvas

---

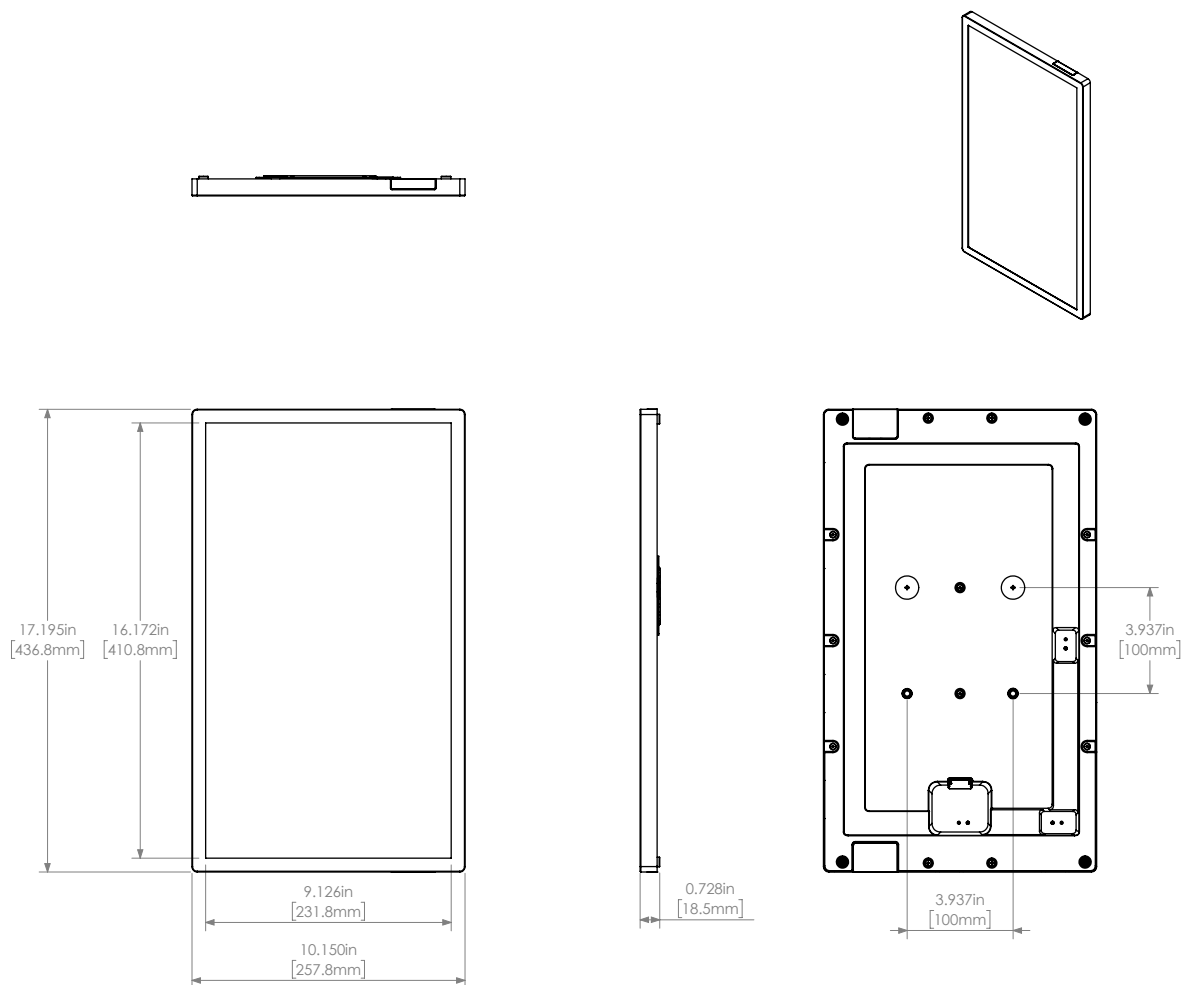


# Datasheet

## V2 Digital Canvas

Mechanical Outline	17.2" x 10.15" x 0.6" (436.8mm x 257.8mm x 16mm)
Weight	6.40lbs (2.9kg)
Brightness	450 cd/m2
Resolution	1920 x 1080 @ 60 Hz
Color	72% NTSC
Active Display Area	16.10" x 9.06" (408.96mm x 230.04mm)
Contrast	1000:1
External Power Supply	Input: VAC110-240V (+/- 10%) @ 50/60 Hz; Output: 24VDC, 5A (120W rated)
Connectivity	802.11 b, g, n, ac / Bluetooth 4.0
RF Frequency	WiFi/BT 2.4/ 5GHz
Antenna	Internal dual MIMO antenna w/auto-diversity
Power Consumption	Max: 35W Typical: 25W Sleep: 7.5W
Environment	Operating temperature: 32°F to 105°F (0°C to 40°C) Operating humidity: 10% to 90% RH (non-condensing) Storage temperature: -5°F to 140°F (-20°C to 60°C)
Certification	Safety: cUL, FCC Part 15 EMI: FCC Class B, CE
Device Mobility	Stationary, Built-in

# Dimensions: V2 Digital Canvas



# Notes

---

## QUESTIONS?

If you have any questions,  
please contact VIDERI support.

**844-873-1399**

**[support@videri.com](mailto:support@videri.com)**

